

# 2025 ASSETS & IMPACT

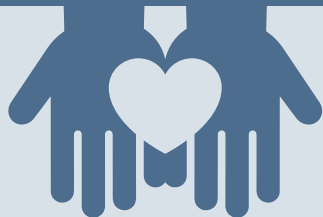
## Supporter Stats

Number of Gifts: **11,436**

First-Time Donors: **3,318**

Retention Rate: **37%**

Median Gift Amount: **\$100**



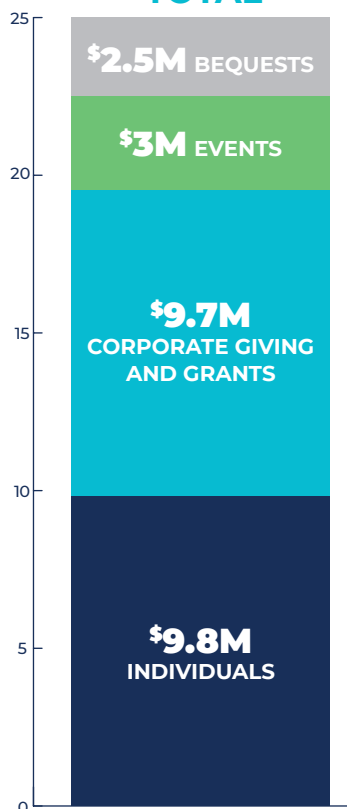
Philanthropy powers Corewell Health's mobile mammography program, bringing lifesaving screening directly to people who might otherwise go without care. Demand continues to rise, and our aging mobile unit must be replaced — along with adding a second unit — to reach twice as many patients with advanced, on-the-go breast cancer detection.

**Your generosity makes early diagnosis possible, saves lives and helps ensure everyone has access to essential cancer screening, no matter where they live.**

2025 marked the second year of the WellBeyond campaign — our bold, five-year effort to raise \$150 million in support of transformative advancements in pediatric care, top-tier talent recruitment and retention, and life-saving research and innovation.

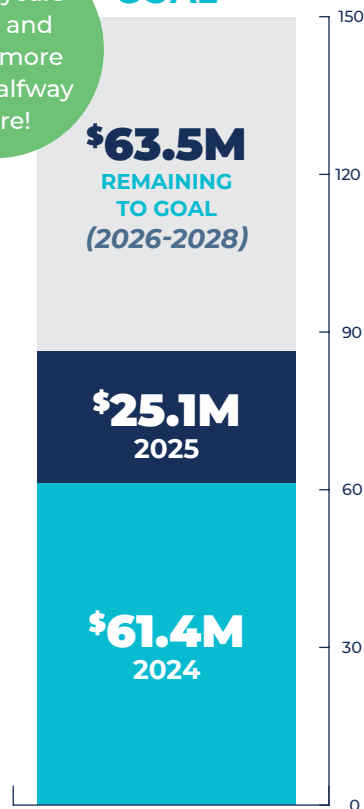
Thanks to your generosity, more than \$25 million was contributed in 2025 alone. Since 2024, we have now raised over \$86 million toward our \$150 million goal — an extraordinary milestone just two years in.

## 2025 FUNDS RAISED \$25M TOTAL



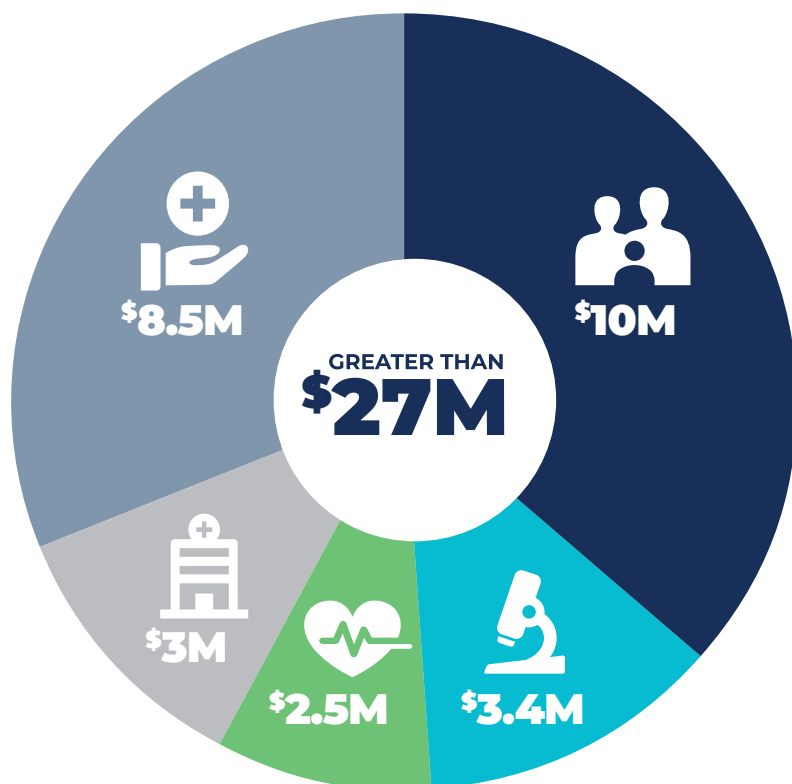
## wellbeyond \$150M GOAL

Three years to go and we're more than halfway there!



# THE IMPACT OF YOUR GIVING

At Corewell Health Foundation West Michigan, every dollar you give goes directly to the area you choose — never reduced by administrative or overhead fees. In 2025 alone, more than **\$27.4 million** was invested across West Michigan, empowering life-saving care, breakthrough innovation and programs that transform lives.



- Helen DeVos Children's Hospital
- Cancer Health
- Cardiovascular Health
- Community Hospitals
- Other\*

*\*includes support for over 80 different critical programs in areas such as neurosciences, trauma, behavioral health, preventative medicine, patient assistance and research innovations.*

Hospital visits can be overwhelming, but our child and family life team helps children and families cope through play, art, music and emotional support. These services aren't covered by insurance, so philanthropy is essential to sustain their availability for all our young patients.

**Your generosity ensures more kids have access to stress-reducing programs that bring comfort and hope during their hospital stay.**

